



# On

F A L L 2 0 0 8

VOLUME 1

## Portland Streetcar Loop

# Track

## Streetcar on track for Portland's Eastside



**The Portland Streetcar in the South Waterfront District.**

Rumors have been around for more than six years that Portland Streetcar was headed for the eastside. Those rumors recently moved closer to becoming reality. City Council has given the green light for the design contractor URS to begin the final design phase of the Portland Streetcar Loop on September 1, 2008. URS estimates eight months to complete design and engineering, with construction slated to begin in summer 2009.

The loop extension will add 3.3 double-tracked miles to the existing streetcar line. It will extend from the Pearl District in NW Portland, crossing the Broadway Bridge, and ending at the Oregon Museum of Science and Industry. When construction is completed in 2011, the streetcar system will be more than 7.3 double-tracked miles, serving riders on both sides of the Willamette River.

Federal, state and local partners are working together to fund the eastside extension – total budgeted project costs are \$147 million. State, regional and local jurisdictions provided more than \$70 million to satisfy the federal desire for fifty percent matching local funds. 🏠

Federal Transit Administration	\$75 million
Local Improvement District	\$15 million
Portland Development Commission (urban renewal funding)	\$27 million
Regional Funds	\$4 million
System Development Charges	\$6 million
Vehicles from State of Oregon	\$20 million
<b>Total Project Costs</b>	<b>\$147 million</b>

Local Required Match

### Portland Streetcar Loop Highlights

- Extends the existing Streetcar to the Eastside
- Increases project area housing units to meet goals outlined in Portland's Central City Plan
- Transports 3.5 million riders per year beginning in 2011
- Attracts 2.4 million square feet of development into the project area
- Adds seven streetcars to the fleet and expands the existing Maintenance Facility

### Streetcar Highlights

- Served 3.5 million riders between July 2001 and June 2008
- \$3.5 billion in investment and more than 10,000 new residential units near Streetcar since 1997
- 8 miles roundtrip, 46 stops and 12 minutes between trains Monday through Saturday during peak travel times
- Achieves and supports regional and local transit, environmental and economic development goals

### Staying in the Loop @ [www.portlandstreetcar.org](http://www.portlandstreetcar.org)

Why wait for a newsletter to find out what's happening with streetcar in your neighborhood? Log onto the Portland Streetcar website at [www.portlandstreetcar.org](http://www.portlandstreetcar.org). If you have questions or comments about the Portland Streetcar Loop Project, contact Kay Dannen at (503) 478-6404 or by e-mail, [dannen@portlandstreetcar.org](mailto:dannen@portlandstreetcar.org). 🏠



Metro



Investing in Portland's Future

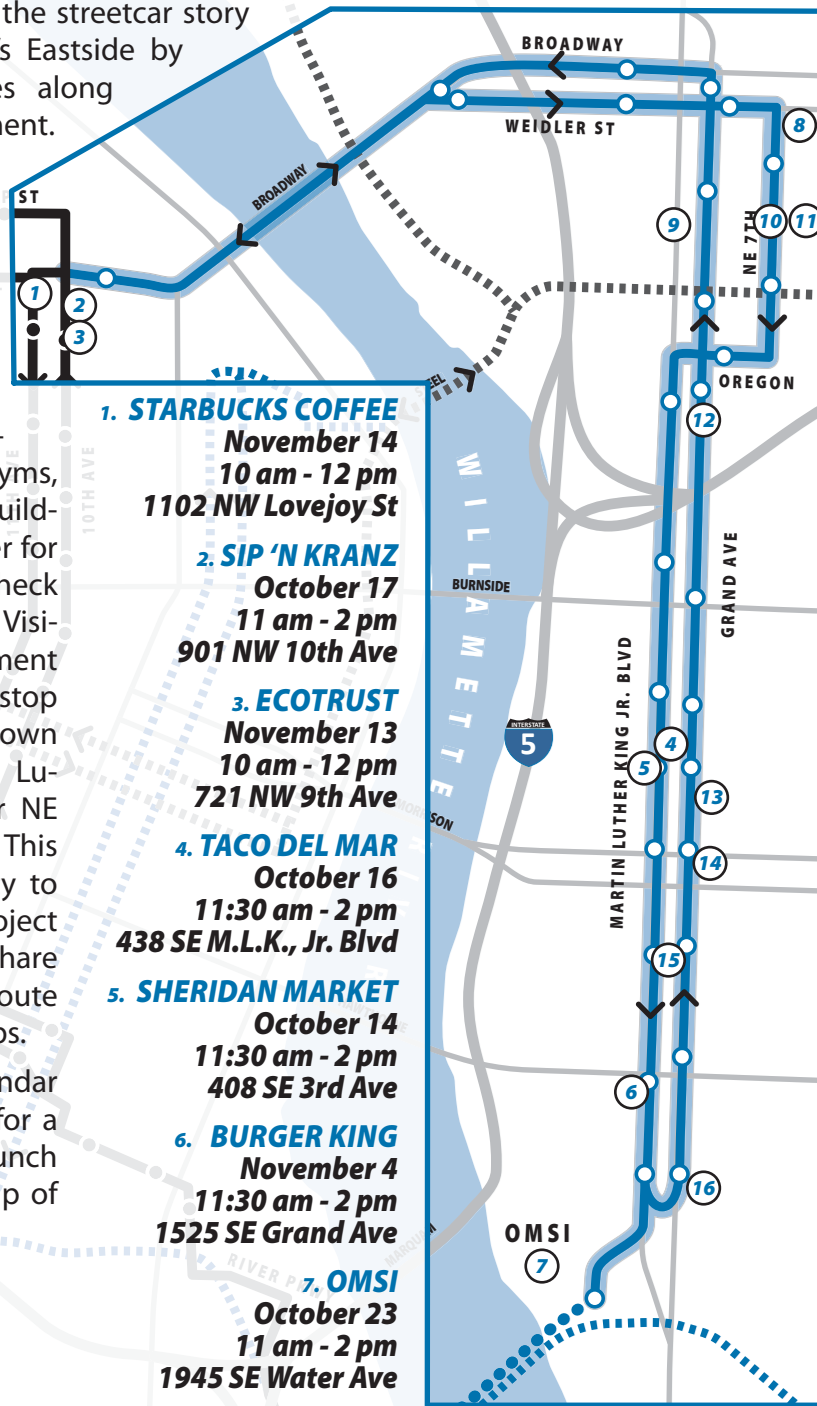


# Bringing the Information to You

This fall, we are bringing the streetcar story to the streets of Portland's Eastside by hosting information tables along the planned eastside alignment. Our goal is to connect with people who travel within the project area and with people who own a business or work along the future streetcar alignment.

Streetcar information tables will be conveniently located near local eateries, gyms, coffee shops, parks and in building lobbies to make it easier for people to take a minute to check out the planned alignment. Visitors can look over the alignment route map and proposed stop locations as they walk down Grand Avenue and Martin Luther King, Jr. Boulevard or NE Broadway and NE Weidler.

This will also be an opportunity to ask questions about the project timeline and funding, and share your comments about the route and proposed streetcar stops. Please check out the calendar and map. Plan to stop by for a quick peek during your lunch hour or before that first cup of coffee!



- 1. STARBUCKS COFFEE**  
November 14  
10 am - 12 pm  
1102 NW Lovejoy St
- 2. SIP 'N KRANZ**  
October 17  
11 am - 2 pm  
901 NW 10th Ave
- 3. ECOTRUST**  
November 13  
10 am - 12 pm  
721 NW 9th Ave
- 4. TACO DEL MAR**  
October 16  
11:30 am - 2 pm  
438 SE M.L.K., Jr. Blvd
- 5. SHERIDAN MARKET**  
October 14  
11:30 am - 2 pm  
408 SE 3rd Ave
- 6. BURGER KING**  
November 4  
11:30 am - 2 pm  
1525 SE Grand Ave
- 7. OMSI**  
October 23  
11 am - 2 pm  
1945 SE Water Ave

- 8. LLOYD ATHLETIC**  
October 10  
8:30 am - 10:30 am  
815 NE Halsey St
- 9. BURGERSVILLE**  
November 12  
11:30 am - 2 pm  
1135 NE M.L.K., Jr. Blvd
- 10. LIBERTY CENTER**  
October 9  
9 am - 11:30 am  
700 NE Multnomah St
- 11. LLOYD CENTER TOWER**  
October 24  
9 am - 11:30 am  
825 NE Multnomah St
- 12. METRO**  
October 21  
11:30 am - 2 pm  
600 NE Grand Ave
- 13. US BANK**  
October 20  
10 am - 12 pm  
636 SE Grand Ave
- 14. BANK OF AMERICA**  
November 6  
10 am - 12 pm  
540 SE Morrison St
- 15. DAILY CAFE**  
October 7  
11:30 am - 2 pm  
1100 SE Grand Ave
- 16. RED WING COFFEE**  
October 30  
7:30 am - 9:30 am  
1700 SE 6th Ave

## Portland Streetcar Loop Estimated Timeline

	2008	2009	2010	2011
<b>Final Design</b>				
<b>Construction</b>				
<b>Substantial Completion of Construction</b>				Spring/Summer 2011
<b>Streetcar Service Begins</b>				Fall 2011

Reduce the carbon footprint! Sign up for e-mail newsletter and construction information at [www.portlandstreetcar.org](http://www.portlandstreetcar.org).

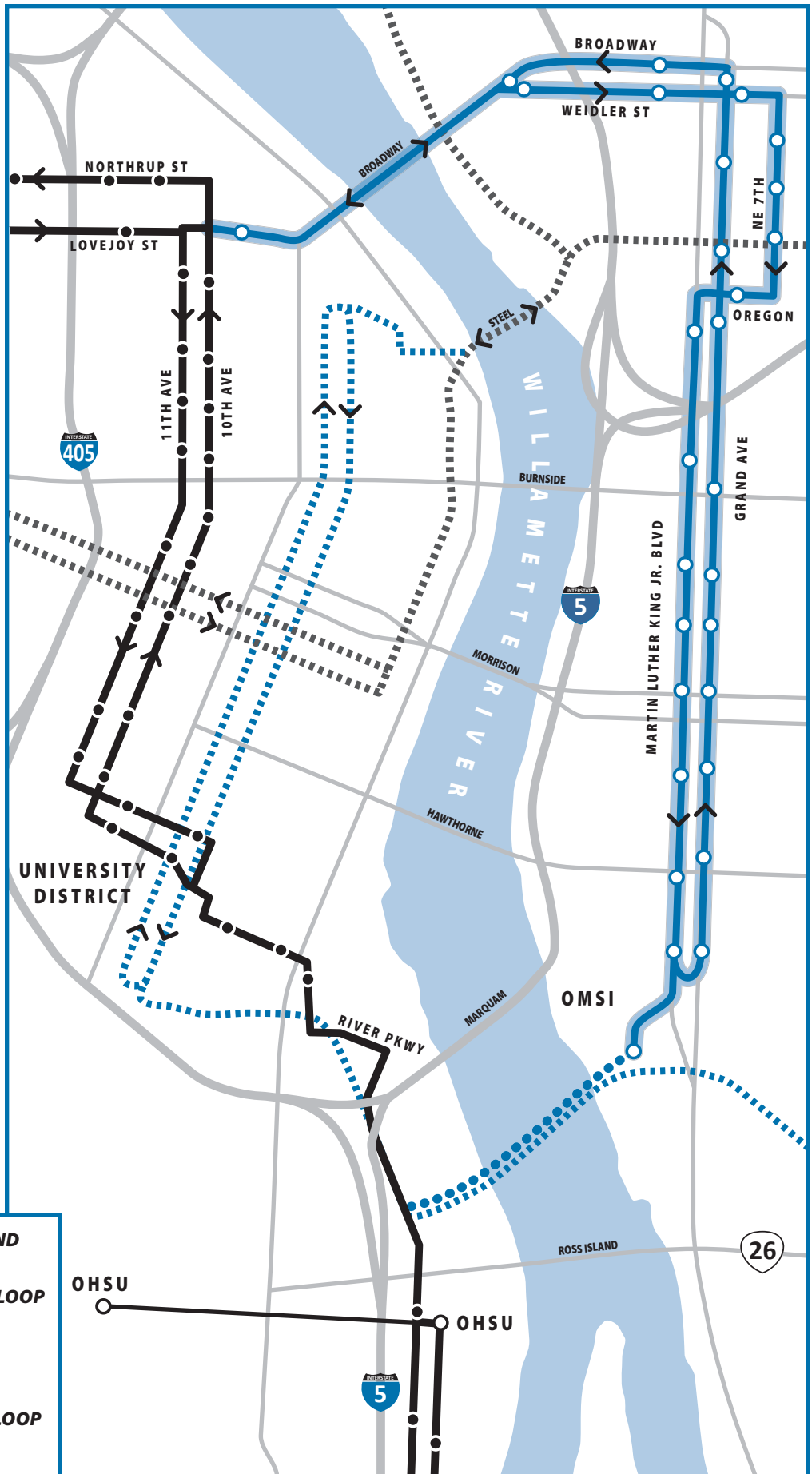
# Laying the Tracks for Streetcar in Portland's Eastside

The loop extension of the Portland Streetcar is on track to open for passengers by late 2011. Streetcar design will be completed by spring 2009, and construction will follow. It won't be long before Portlanders are once again commuting by streetcar across the Willamette River.



**Make Portland Mothers happy on Mothers Day ... Ride streetcars, eliminate traffic worry. (1936)**

The loop alignment will terminate at the Oregon Museum of Science and Industry. Later, as a separate project, the Streetcar Loop could be completed via a new bridge being considered as part of the Portland-Milwaukie Light Rail Project allowing a continuous connection around the central city. This proposed bridge will be for MAX, streetcars, bikes, pedestrians and buses only.



- EXISTING STREETCAR AND STATIONS
- PROPOSED STREETCAR LOOP AND STATIONS
- EXISTING LIGHT RAIL
- FUTURE LIGHT RAIL
- CLOSE THE STREETCAR LOOP
- AERIAL TRAM



## Portland Streetcar Loop

1140 SW 11th Avenue  
Suite 500  
Portland, OR 97205

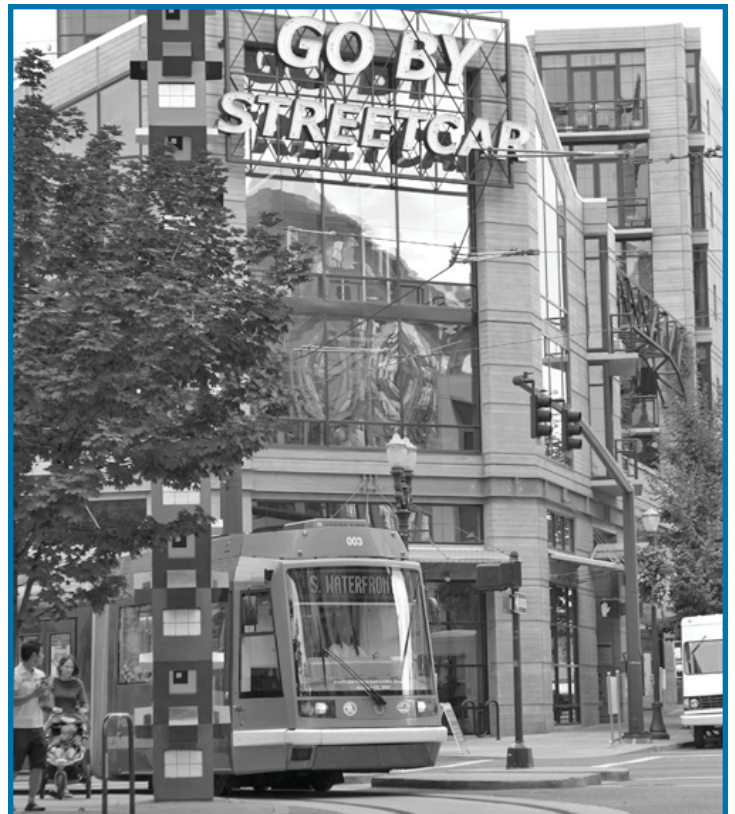
## Streetcar's Future in Portland – Getting Involved

**B**uilding Portland's streetcar requires collaboration, partnering, and volunteers. Throughout the six year planning process for the loop extension, we have been meeting monthly with a project advisory committee made up of neighborhood and business association members, city staff, TriMet and Metro staff, business owners and regional transportation planners. Committee members' volunteer time and effort have played a huge role in moving this project forward.

If you are interested in getting involved in the Portland Streetcar Loop, please contact Kay Dannen at (503) 478-6404 or by e-mail [dannen@portlandstreetcar.org](mailto:dannen@portlandstreetcar.org).

[www.portlandstreetcar.org](http://www.portlandstreetcar.org)

Reduce the carbon footprint! Sign up for e-mail newsletter and construction information at [www.portlandstreetcar.org](http://www.portlandstreetcar.org).



**GO BY STREETCAR at NW 11th and Lovejoy in Portland's Pearl District.**